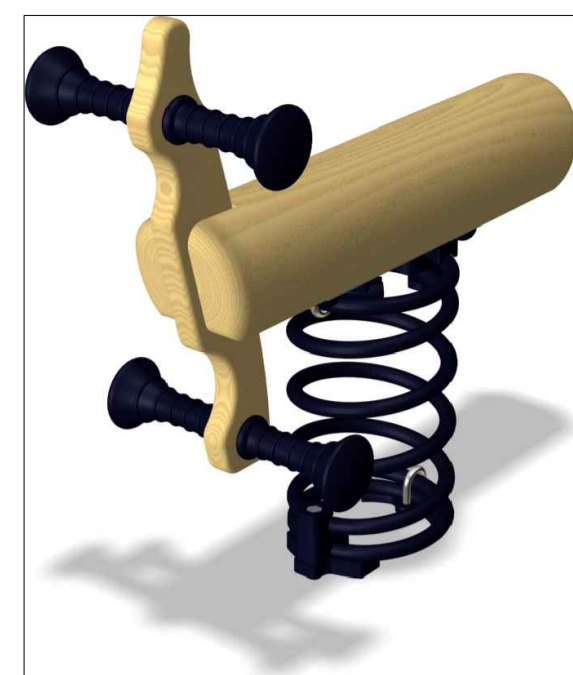




Overall Key Plan Scale 1:2000



2. Pony spring, Age 3+



2. Two seat swing, Age 3+



3. Double spring, Age 3+



4. Seesaw, Age 4+



5. Tower house with slide, Age 6+

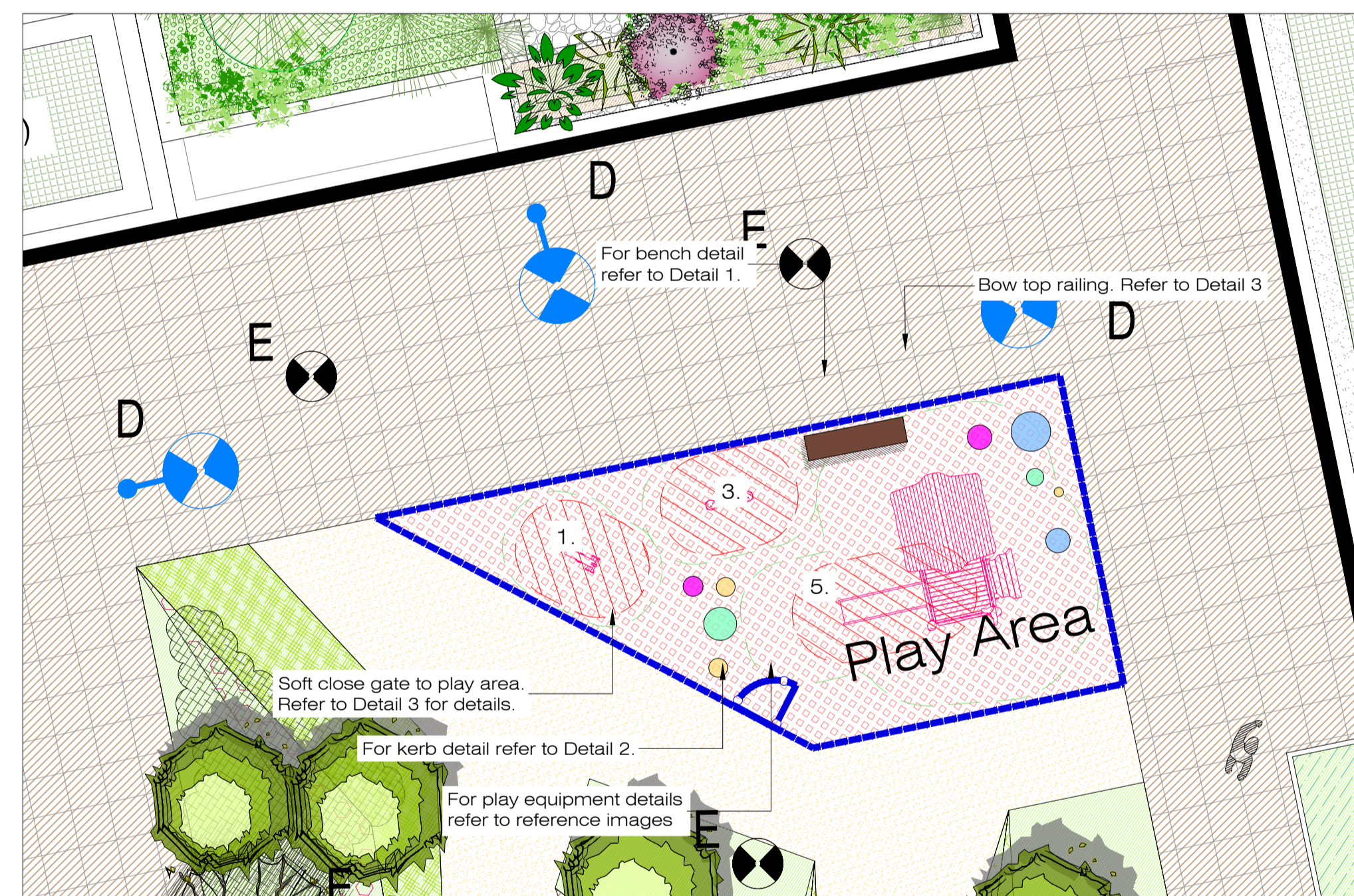
LEGEND

HARD SURFACES:

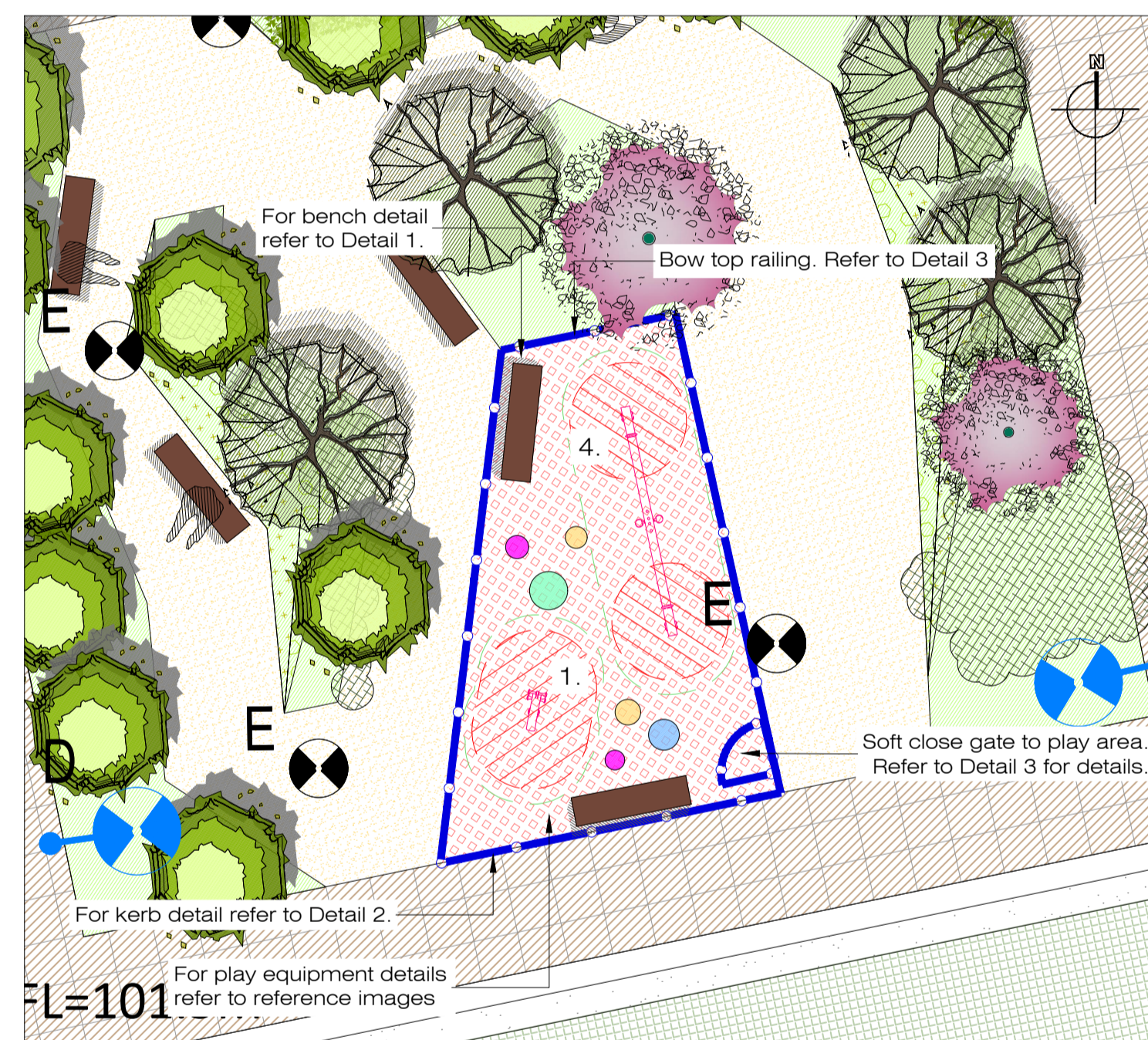
- Shared table
- Tarmac road surface
- Parking paving
- Courtyard paving
- Footpath paving
- Feature paving bands
- Paved cycle paths
- Cycle paths
- Paving setts
- Paving tiles
- Resin bound paving
- Wet pour play surface
- Creche play area

SOFT LANDSCAPING:

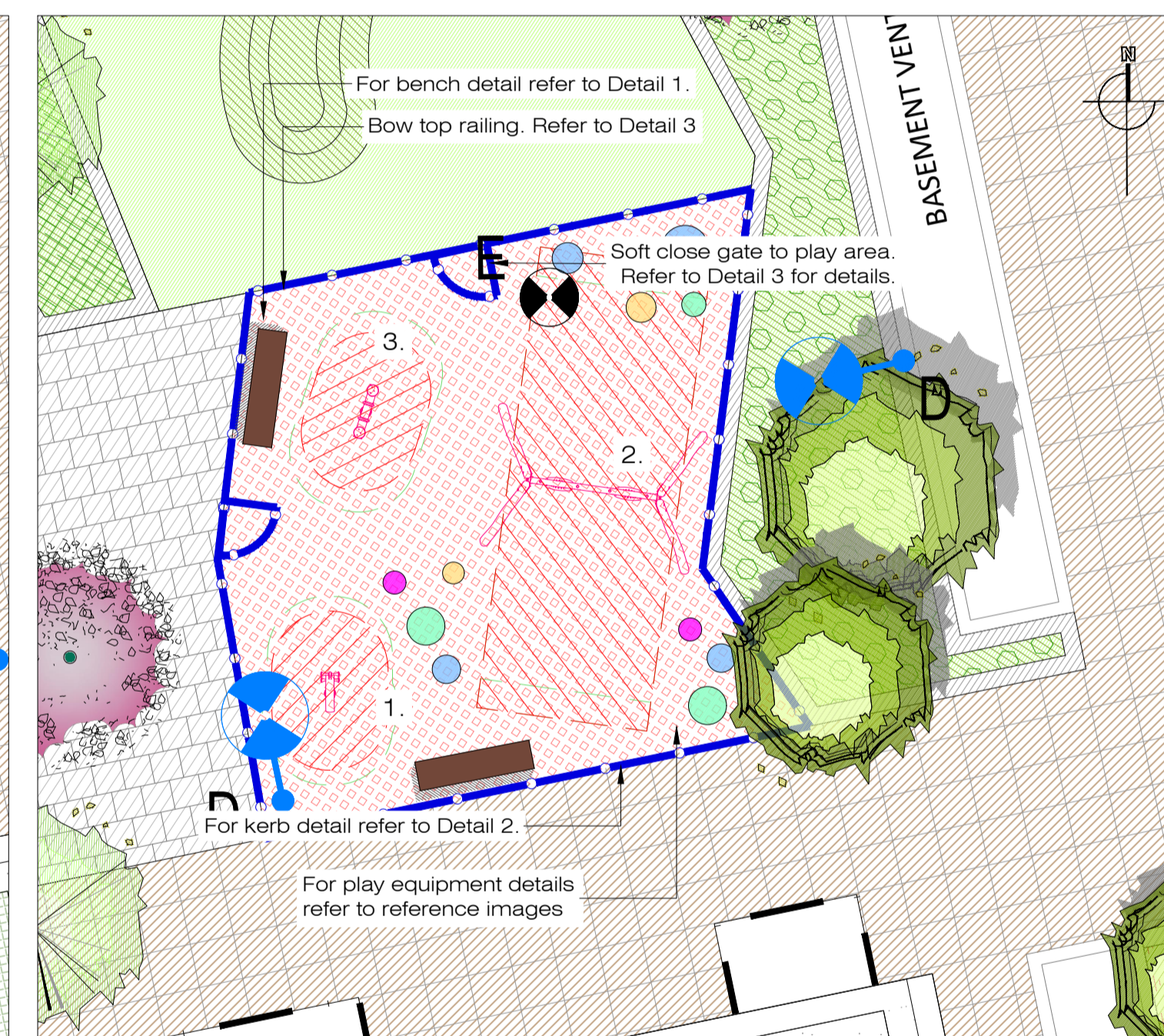
- Existing trees retained
- Proposed avenue trees
- Proposed street trees
- Proposed courtyard trees
- Grass - communal courtyards
- Proposed shrub planting
- Proposed shrub planting 1
- Proposed shrub planting 2
- Proposed ornamental grasses mix 1
- Proposed ornamental grasses mix 2
- Proposed floral mix
- OTHER:**
- Apartment railings/balustrade to architect's detail
- Proposed 1.9m flat bar railing proposed along Belgard Road boundary
- Proposed 1.2m high bowtop railing surrounding play areas
- Mounding
- Proposed benches
- Proposed communal seating areas
- Proposed raised planting beds
- Proposed play equipment (supplied by Kortgan or similar approved)
- Proposed play house
- Proposed seesaw
- Proposed horse springer
- Proposed lighting standards
- Proposed rental bike parking (front of students accommodation building)



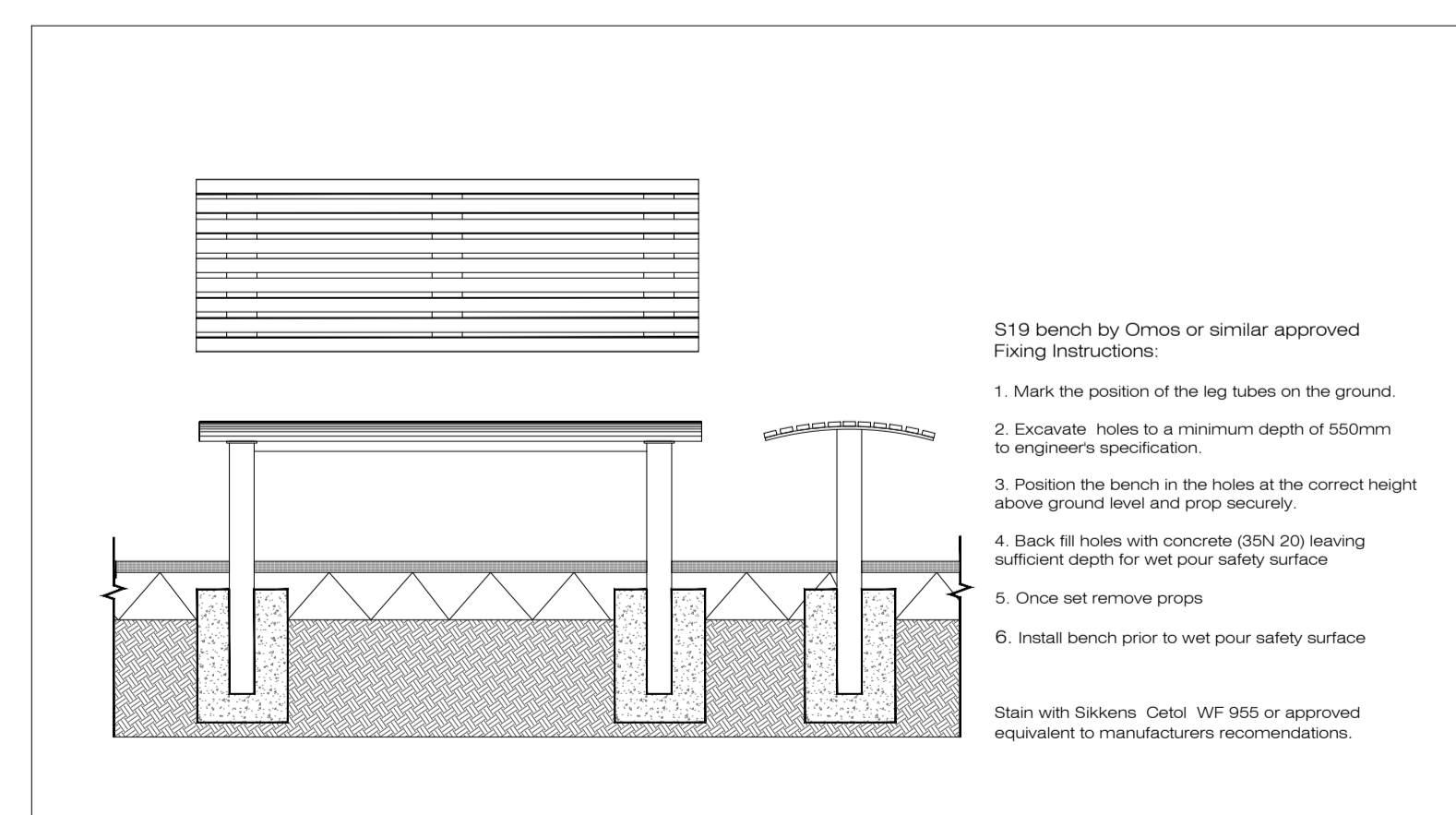
Play Space 1 Scale 1:100



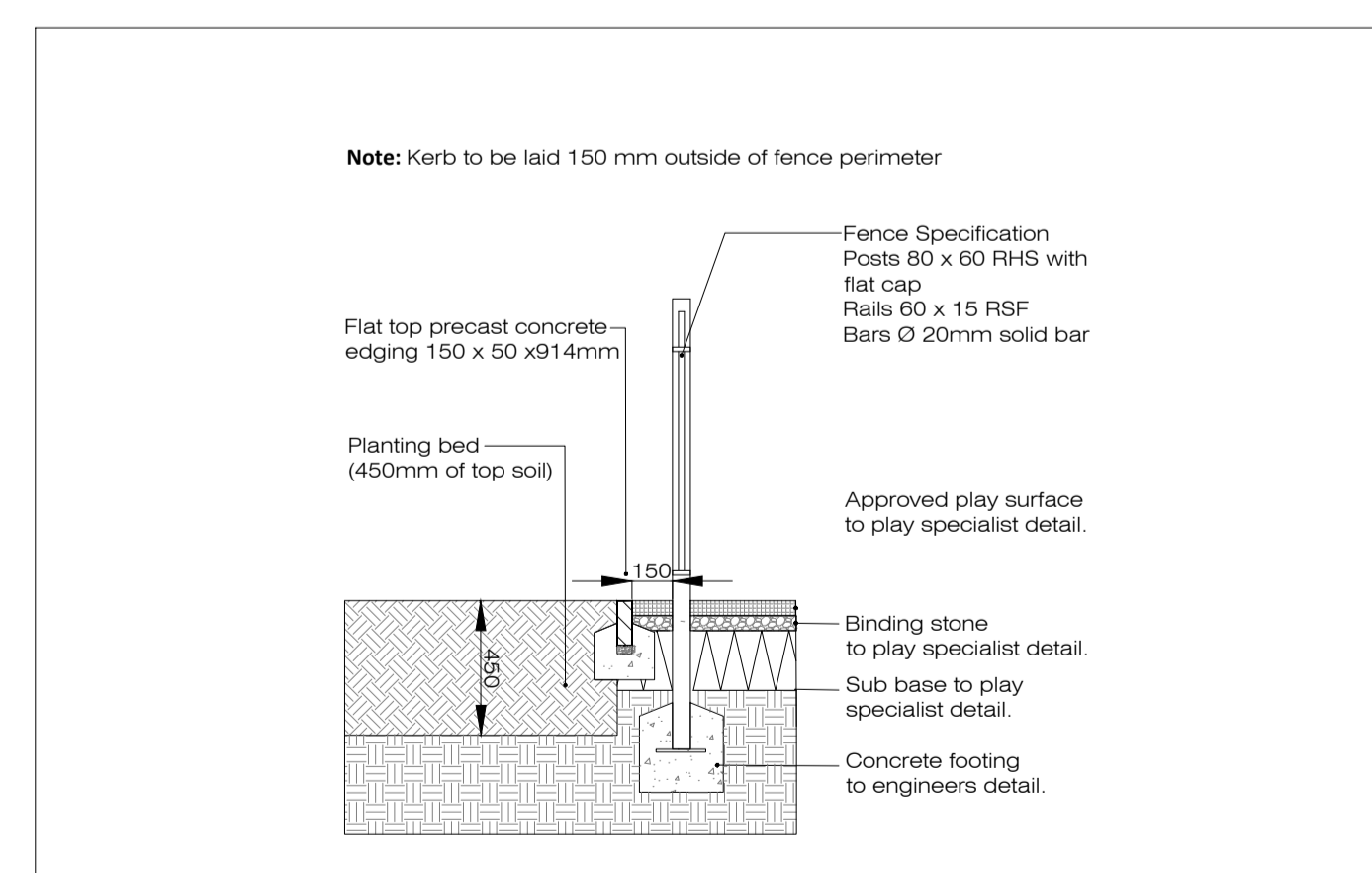
Play Space 2 Scale 1:100



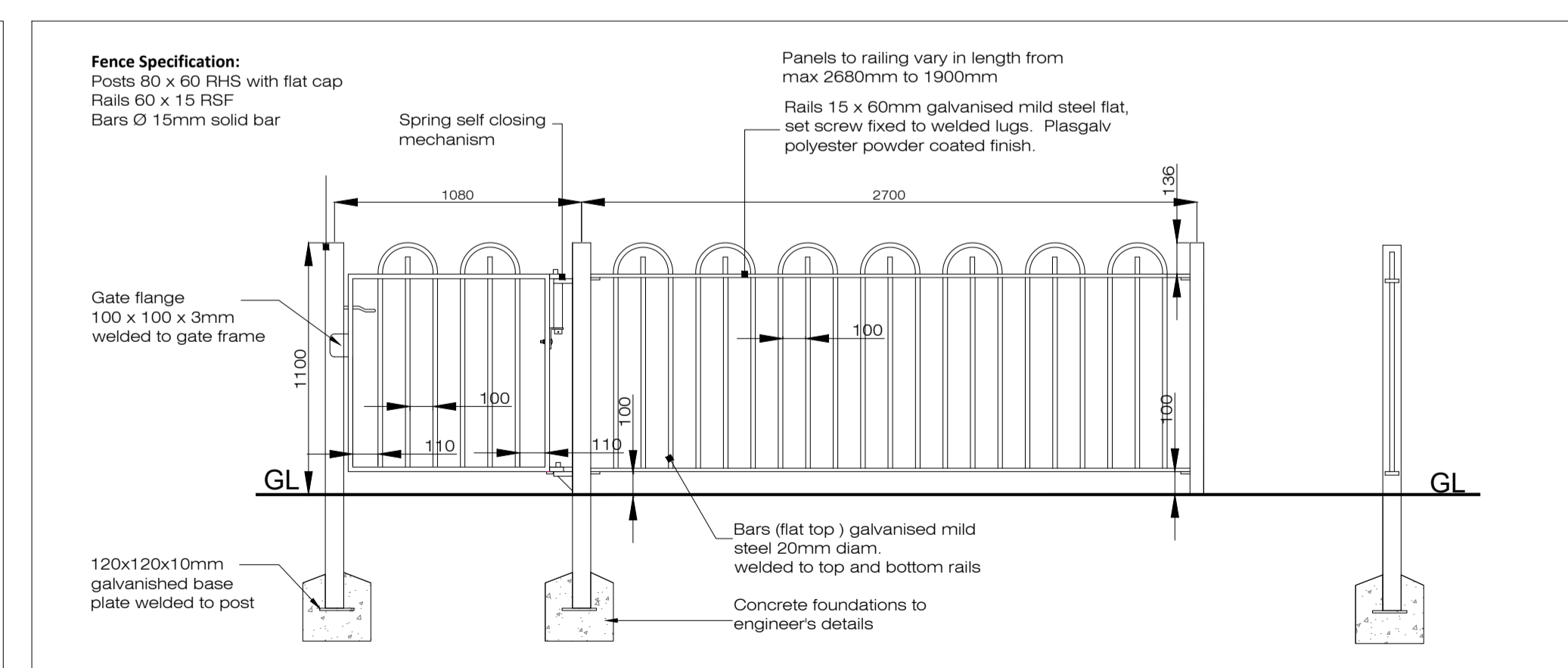
Play Space 3 Scale 1:100



Detail 1: Bench Detail Scale 1:25



Detail 2: Kerb detail Scale 1:25



Detail 3: 1.2m high bow top railing Scale 1:25

Rev	Date	Drawn	Checked	Description
00	12.11.18	SD	TB	PLANNING

Notes	
S19 bench by Omco or similar approved. Fixing instructions: 1. Mark the position of the leg tubes on the ground. 2. Excavate holes to a minimum depth of 550mm to engineer's specification. 3. Position the bench in the holes at the correct height above ground level and prop securely. 4. Back fill holes with concrete (35N/20) leaving sufficient depth for wet pour safety surface. 5. Once set remove props. 6. Install bench prior to wet pour safety surface. Stain with Sikkers Cetol WF 955 or approved equivalent to manufacturers recommendations.	

COPYRIGHT © ALL RIGHTS RESERVED.
THIS WORK IS COPYRIGHT AND CANNOT BE REPRODUCED OR COPIED IN ANY FORM WITHOUT THE WRITTEN PERMISSION OF THE PROPRIETOR.
DO NOT SCALE FROM THIS DRAWING. WORK ONLY FROM FIGURED DIMENSIONS.
THIS DRAWING TO BE READ IN CONJUNCTION WITH RELEVANT CONSULTANT'S DRAWINGS.

Ordnance Survey Ireland Licence No AR 0001318
© Ordnance Survey Ireland/Government of Ireland

Project: BELGARD GARDENS Tallaght Phase 1 for Atlas GP Ltd. Belgard Road, Tallaght, Dublin 24		Project No. 6494	
Drawing: Proposed Play Areas Ground Floor Courtyards/First Floor Podium		Drawing No. 307	Rev. 00
Scales: VARIES @ A1		Status: PLANNING	Date: 12.11.18
Canal House, Canal Road, Dublin 6 Tel: +353(0)1 2881900		mail@brayshymannmartin.com www.brayshymannmartin.com	Drn: SD Cdt: TB Passed

